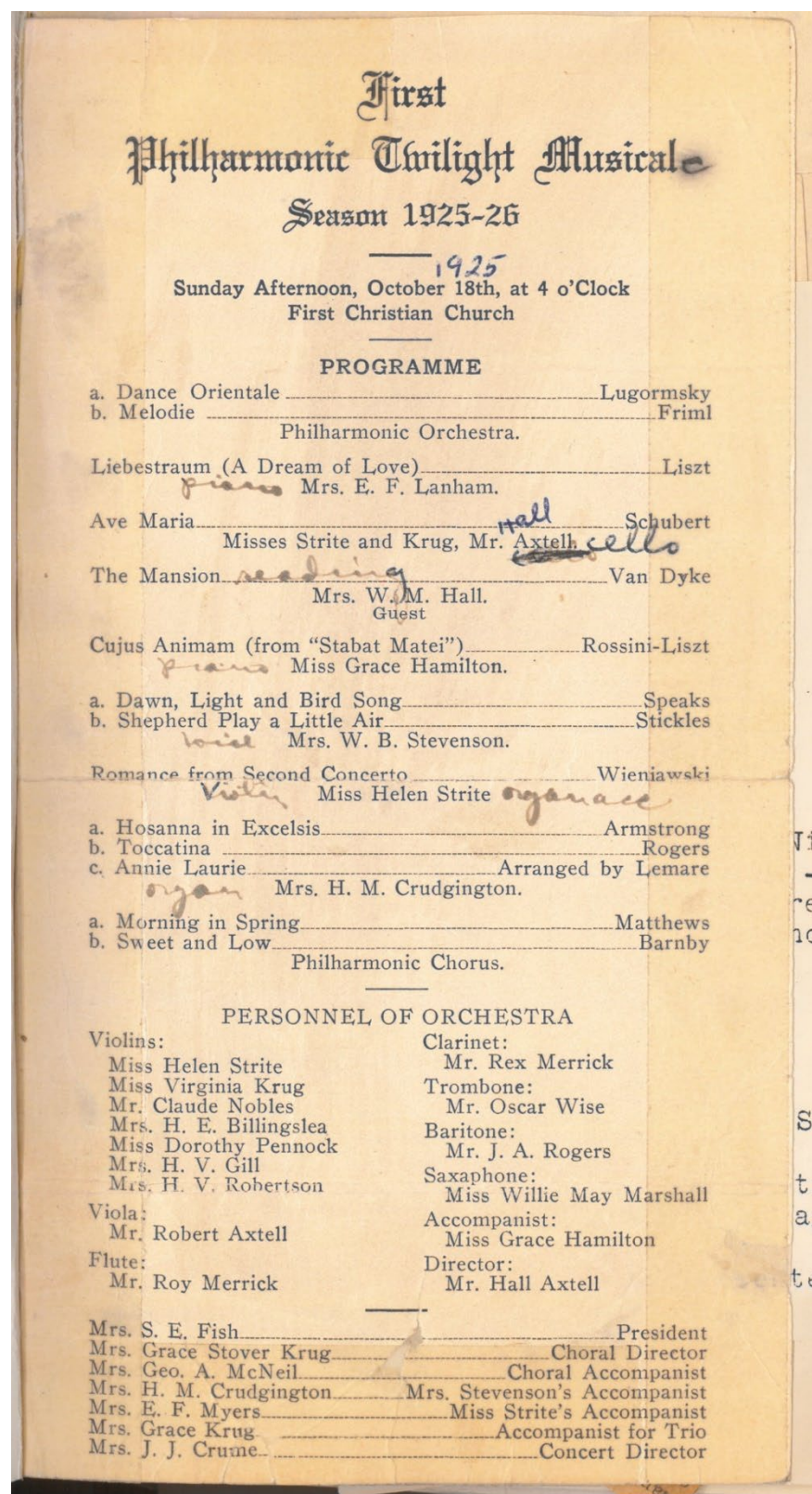


Opening Night
October 18, 1925

The brainchild of members of the Amarillo Philharmonic Club, one of the Panhandle's many women's music clubs, the majority of the performers for the symphony's first concert are women from the community.



Ellis B. Hall
Music Director from 1926-1934

- Hall was a teacher at Amarillo College and organized the Academy of Music and Arts in Amarillo
- Programs feature Vocal Soloists or Violinists
- On Average he includes ten pieces on a program, many more than the three we usually hear on a program today.
- He includes a blend of European and American composers
- Often opens with an Overture
- Collaborated with local dancers/dance groups (The Balladettes and Balladors from Amarillo College, for example).
- Programmed portions of larger, canonic works

Dr. H.L. Robison's program from
January 21, 1938
Radie Britain was a female composer
from Silverton Texas who studied at
Clarendon College, the American
Conservatory in Chicago, and later with
famous composers in Paris, Berlin, and
Munich.

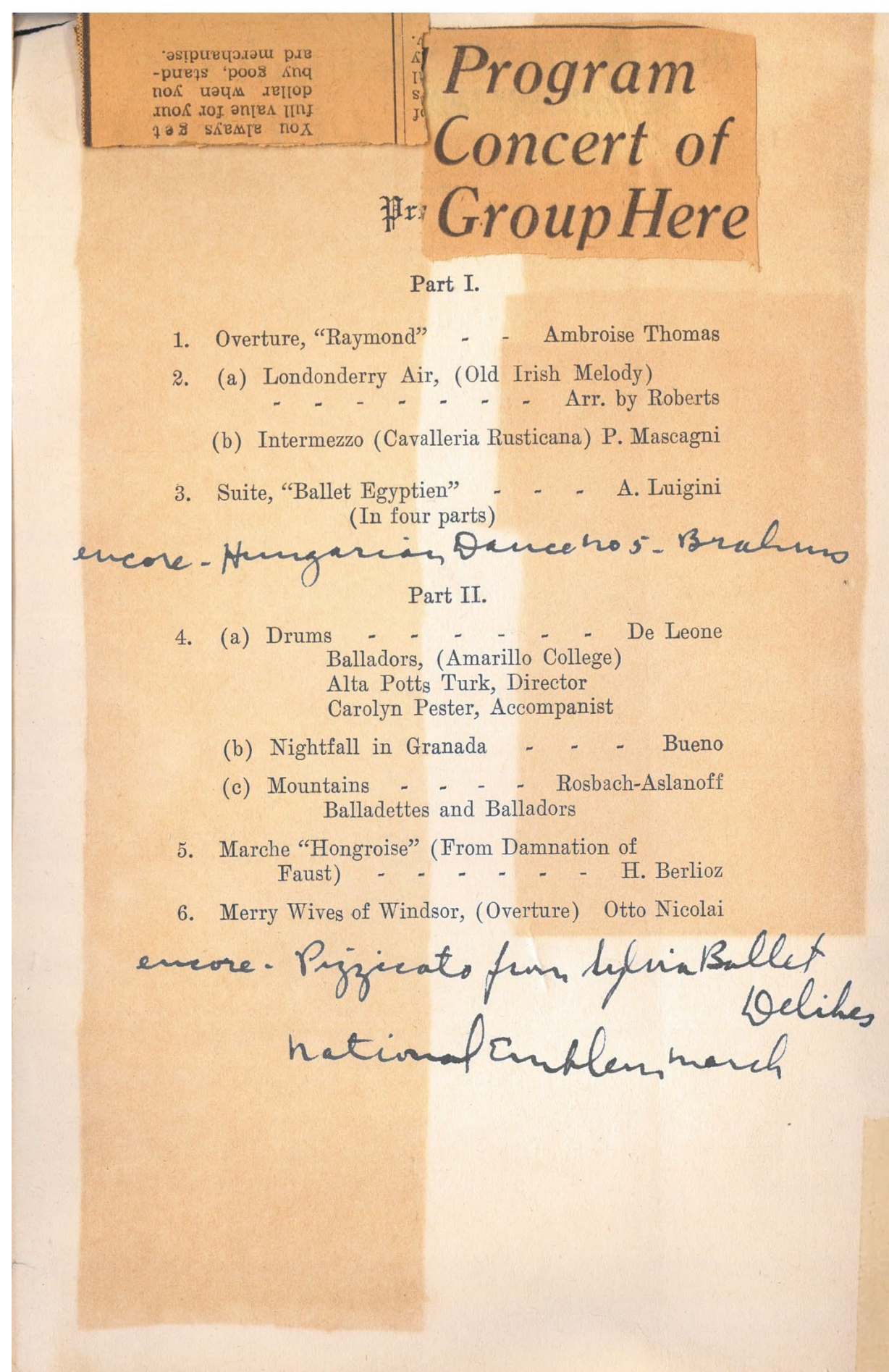
This program notes the first performance of one of her works by the Amarillo Symphony, which premiered her *Cowboy Rhapsody* in 1956.

This project is supported by a WT Killgore Faculty Research Grant.



The Amarillo Symphony: The First 100 Years

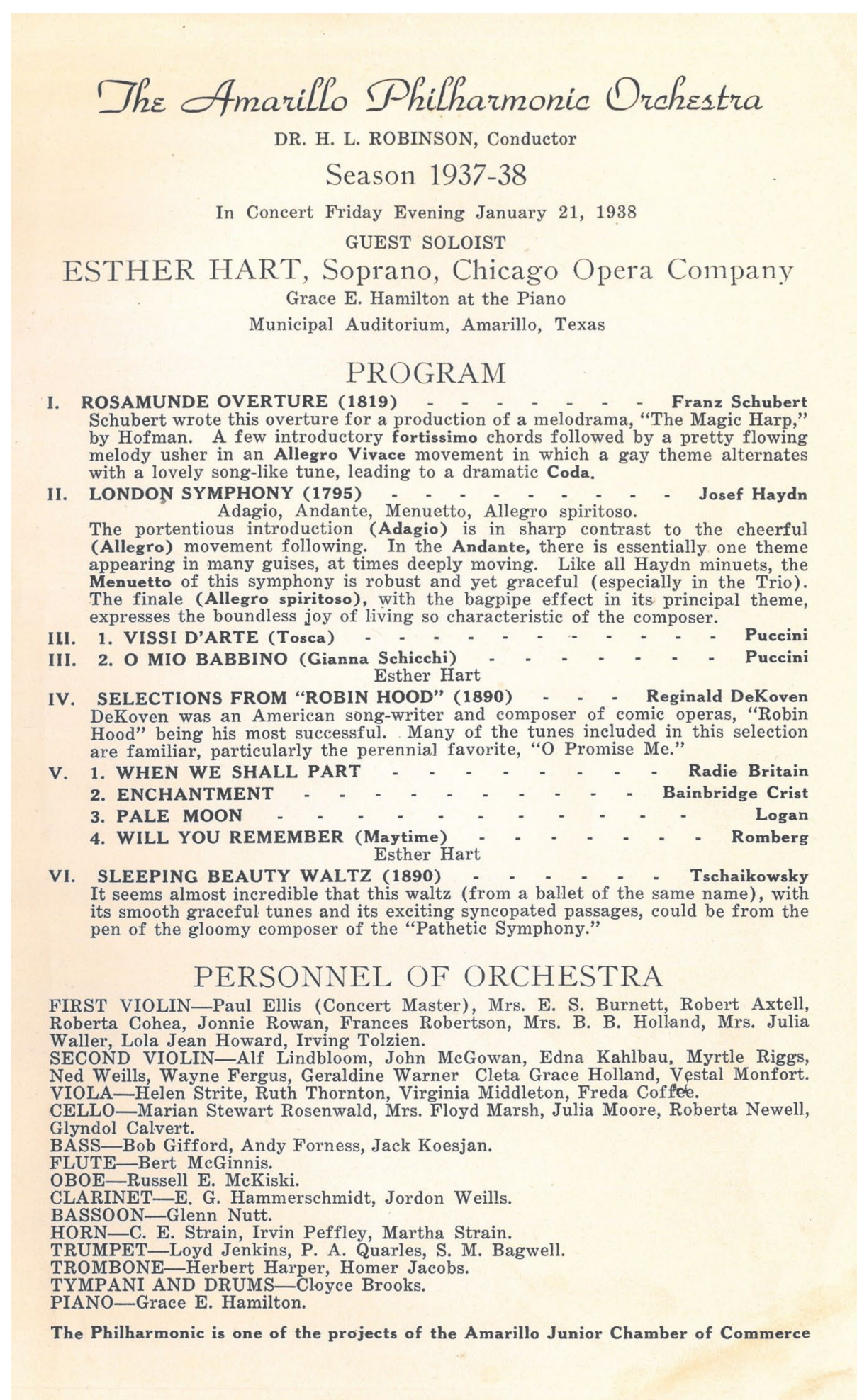
It is viola player and Amarillo resident **Ada Morris** we can thank for our nearly comprehensive collection of Amarillo Symphony programs, some with her annotations.



Ellis B. Hall's program
from November 14, 1933

Dr. H.L Robinson
Music Director from 1936-1938

- Followed a period of guest conductors from 1934-1936
 - Taught Clarinet and Modern Languages at Amarillo College
 - Programmed more American composers
- Blended “serious” and “popular” music on his programs



The Amarillo Symphony Orchestra, one of the Panhandle's longest standing cultural institutions, boasts a long and rich history that calls attention to Amarillo's position as a longstanding cultural center of the American Southwest.

The ASO's programming history tells us about cultural trends and musical interests during various periods in the symphony's long history.



In 1939 the ASO welcomed guest artist **Thurlow Lieurance**, famed interpreter of Native American music and culture to the stage. He was accompanied by his wife who sang his greatest hit, “By the Waters of the Minnetonka” and a Pawnee Dancer named We Ta Mo Tah.

More Recently...



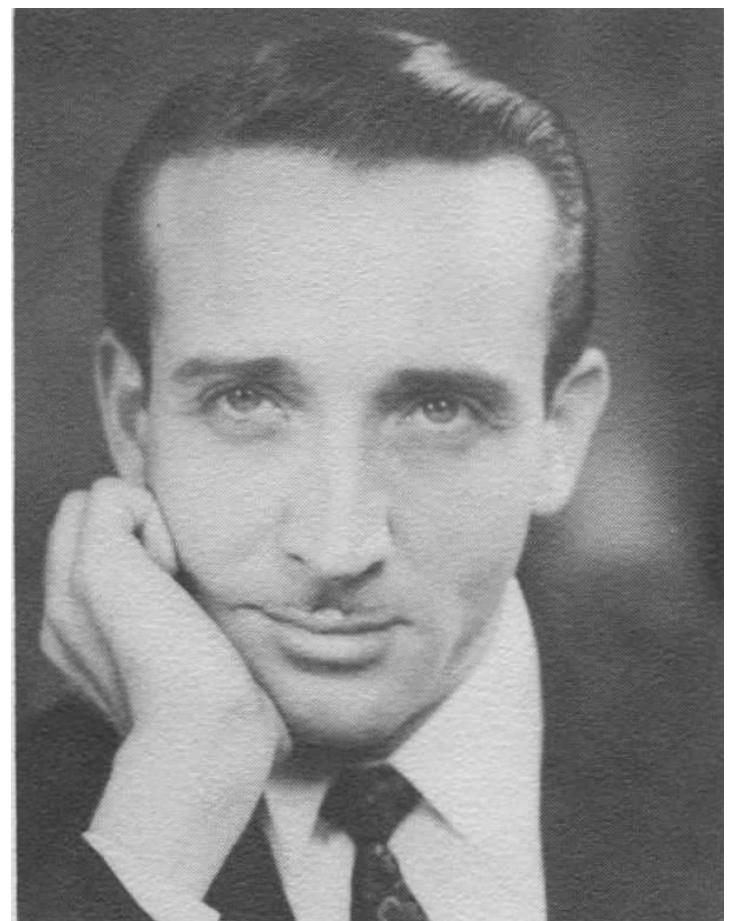
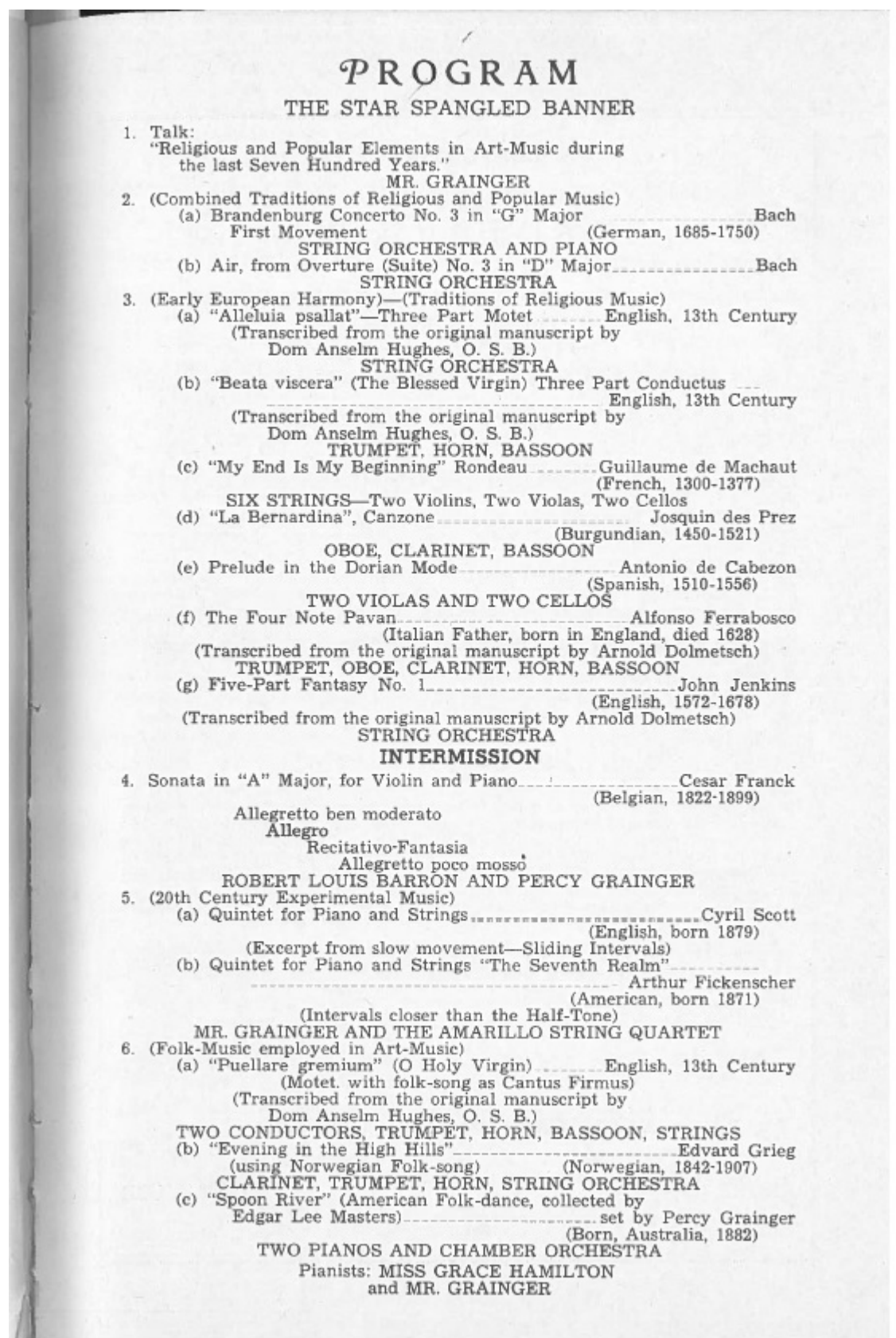
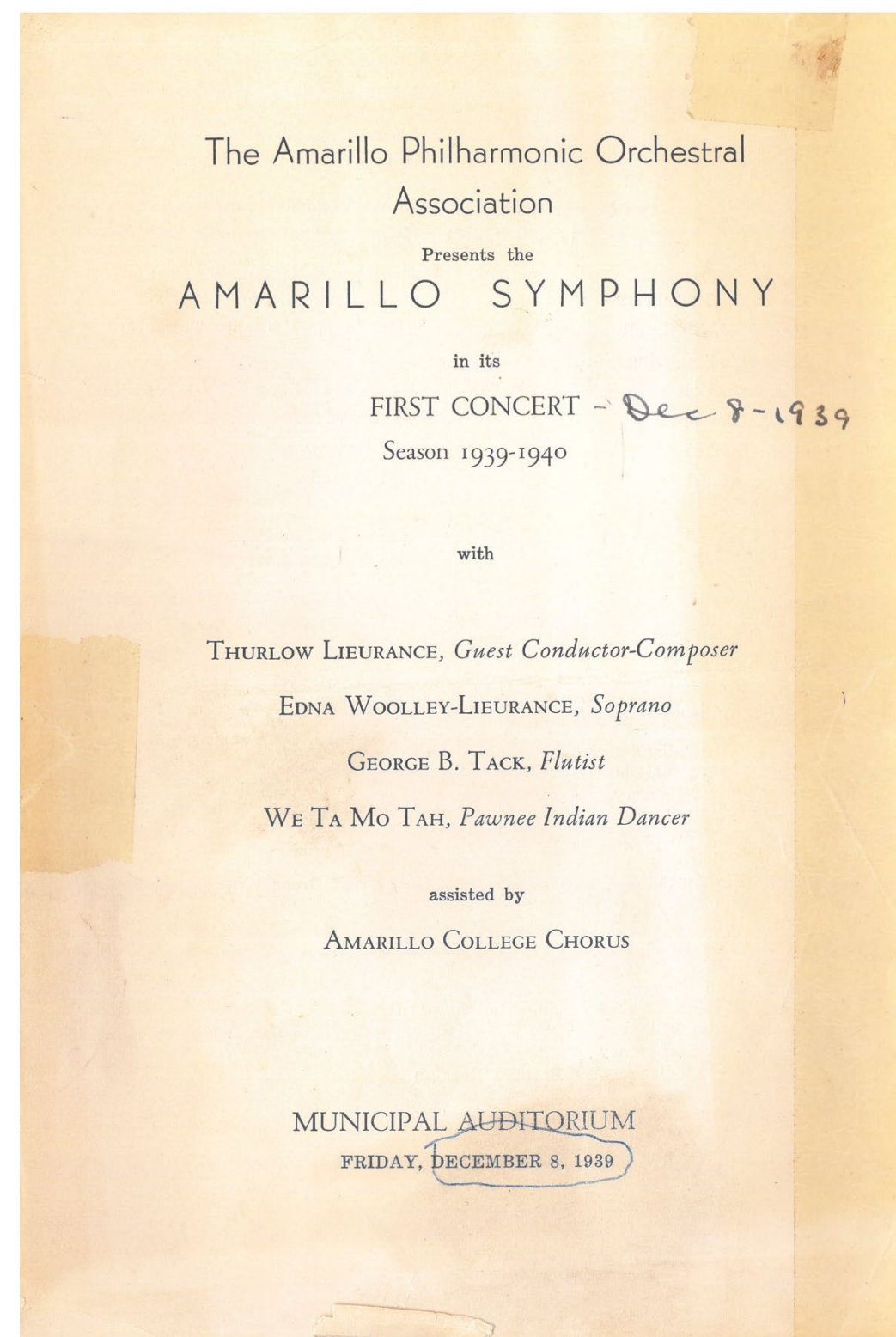
Jacomo Bairos
Music Director

from 2013-2021
Programmed more
newly composed
music and Latin-
inspired music



Murray Meeker
Music Director for one
season: 1938-39

- Programmed 11 concerts (the greatest number of concerts offered by the ASO to date)
- Arranged a landmark performance of George Gershwin's *Rhapsody in Blue*



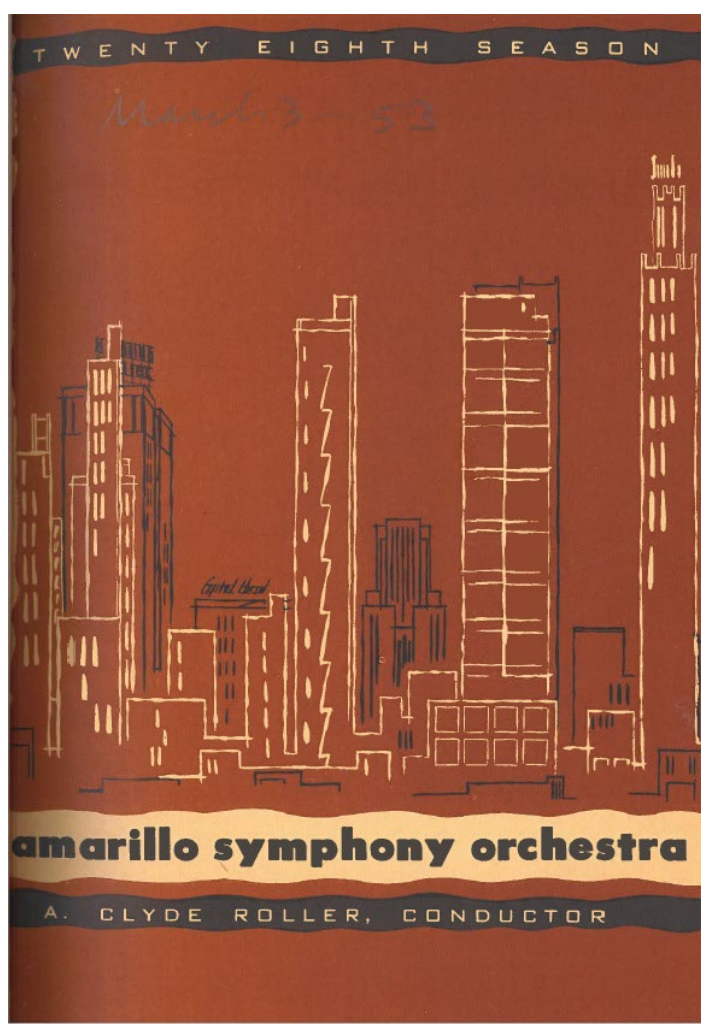
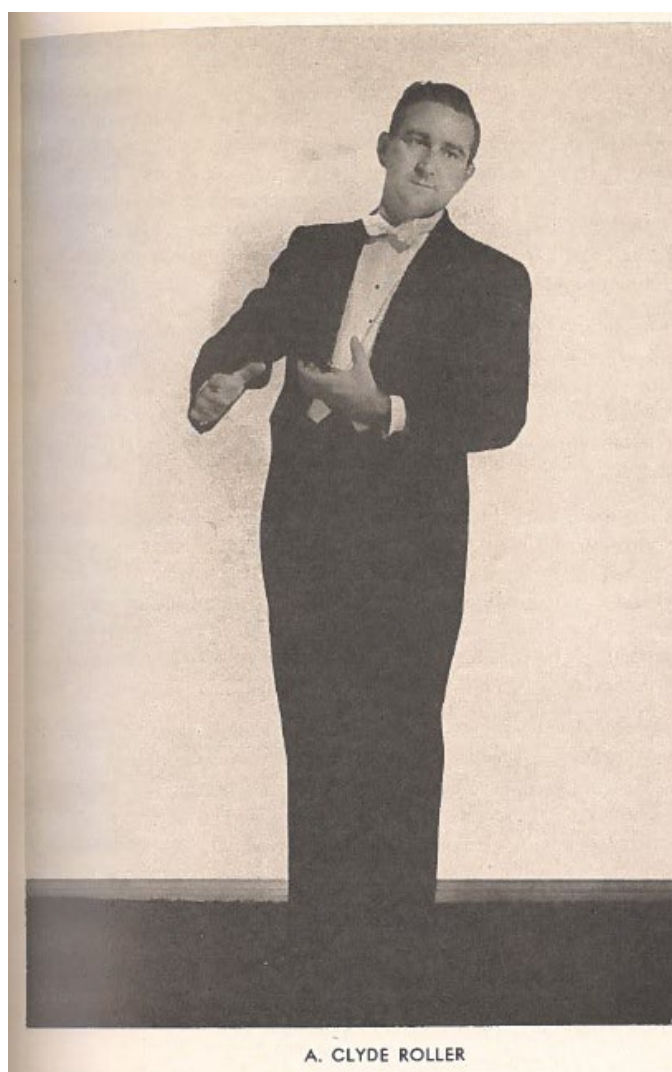
Thomas Hohstadt

Music Director from 1963-1974

- Native of Oklahoma,
- Worked at the Eastman School of Music
- Increased the size of the ensemble
- Added the Symphony Chorus
- Enhanced educational initiatives
- Initiated pre-concert talks
- Broadcast concerts on the “Voice of America” radio show

Jim Setapen
Music Director from 1988-2007

- Last music director to live in Amarillo
- Traditional Programming,
 - Three works/concert
- Conducted two premieres of works by Sam Jones, one in 1992 and one celebrating the ASO's 75th Anniversary in 2000.

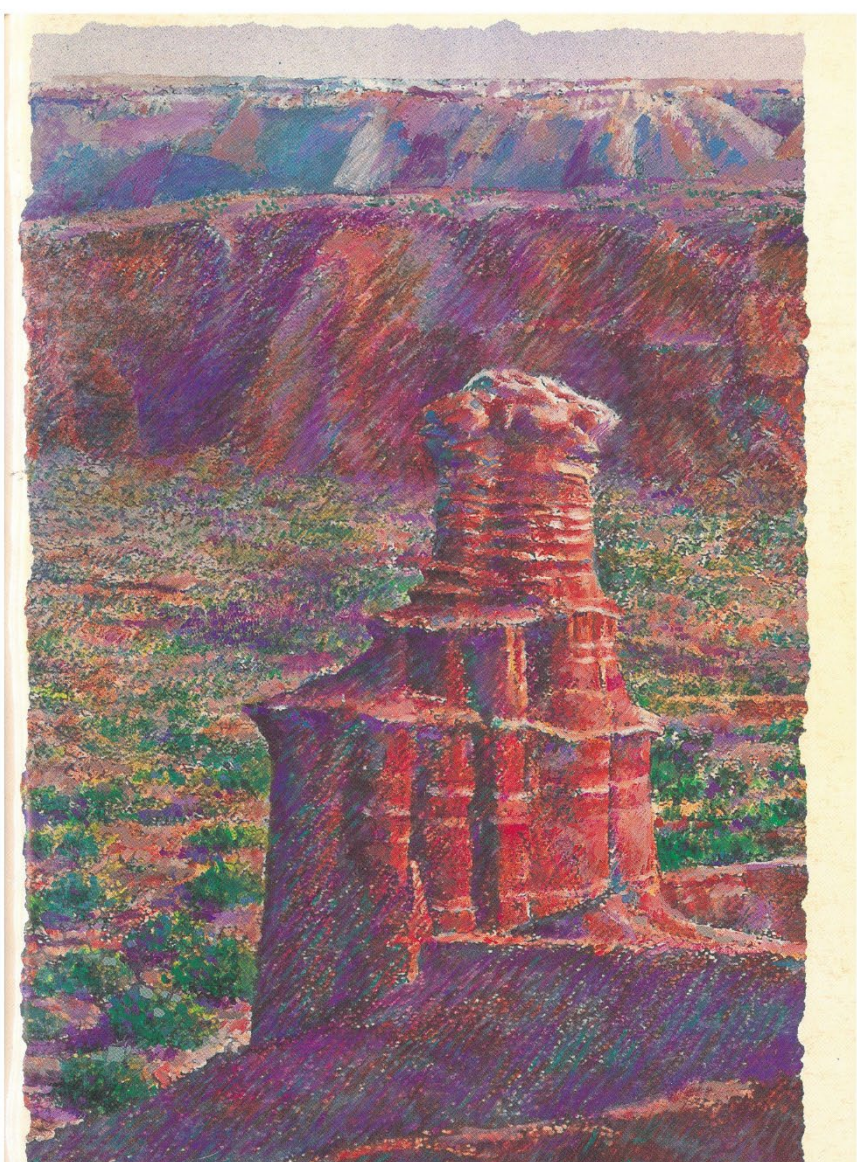
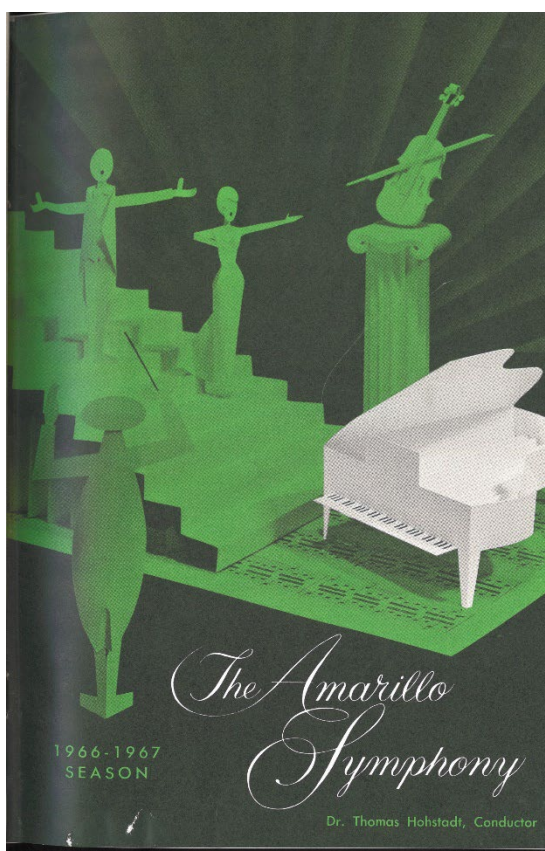
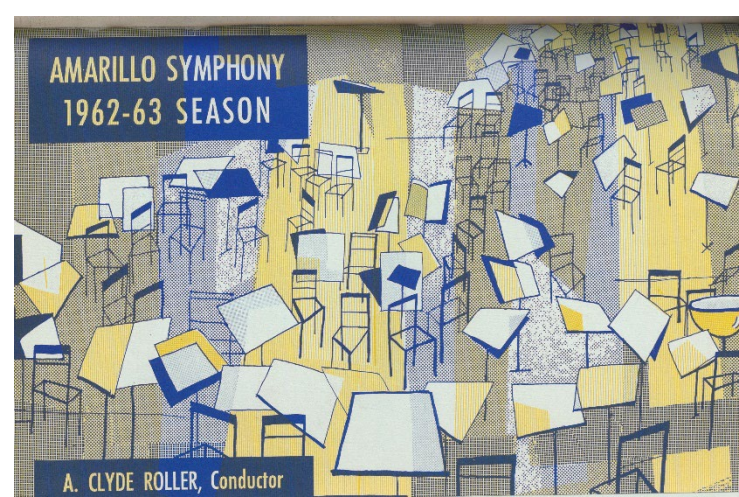
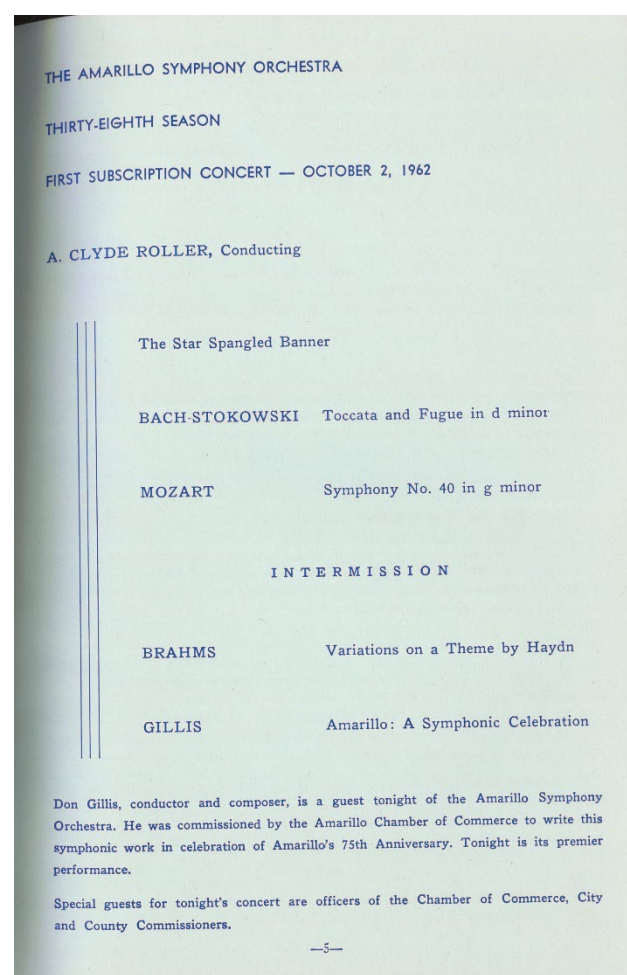


Clyde Roller

Music Director from 1948-1962

- Dynamic personality and director
- Launched outreach and educational initiatives
- Celebrated Amarillo's 75th birthday in 1962 with a commission by American composer Don Gillis.
- Programmed entire canonic works, challenging repertoire

Scan the QR
Code below to
listen to Don
Gillis's
*Amarillo: A
Symphonic
Celebration*
and Sam
Jones's *Palo
Duro Canyon
Symphony*
(1992) and
Roundings
(2000)



The Amarillo Symphony 1991-92 Season